



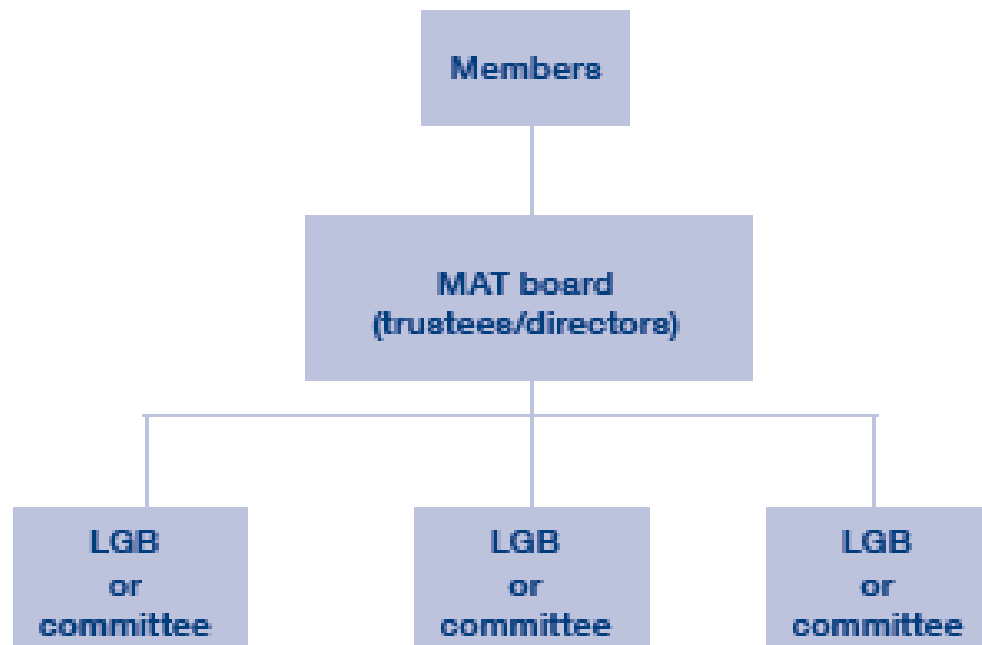
Collaboration: Past, Present and Future Structures

Tony McPhillips & Jill Donabie

Monday 23 May 2016

MAT

- Company structure



MAT

- “Academy trust” established with a view to running two or more academies
- Company limited by guarantee and charity
- Members
- Board of directors
 - CEO / executive head is normally a director
 - foundation directors in the majority
 - at least two parent directors?
- Committees / local governing bodies

MAT



- Directors will decide how much responsibility to delegate committees / local governing bodies e.g. significant decision making power versus advisory only
 - depends on the number and size of the schools and their performance and capacities
- MAT will receive funding from EFA
- Directors may retain (“top slice”) a percentage of schools’ funding for central services

Process



- GB to resolve to convert (or consider)
- Consultation
- Application to DfE (and funding)
- Order received

Process



- Establish MAT
- Due diligence
- Land Issues (PFI)
- Governance Issues
- TUPE
- Transfer Agreement
- Funding Agreements



Questions?

Contact us



Tony McPhillips
Partner
0191 211 7908
tony.mcphillips@muckle-llp.com



Jill Donabie
Senior Associate
0191 211 7933
jill.donabie@muckle-llp.com

muckle^{LLP}

